

# 35<sup>th</sup> EUROPEAN SYMPOSIUM

on Reliability of Electron  
Devices, Failure  
Physics and Analysis

**ESREF  
2024**

## **SPONSORSHIP & EXHIBITION Prospectus**

September 23-26, 2024  
**PARMA, Italy**

[www.esref2024.org](http://www.esref2024.org)

<b>3</b>	<b>WELCOME MESSAGE</b>
<b>4</b>	<b>ORGANIZING COMMITTEES</b>
<b>4</b>	<b>STEERING COMMITTEES</b>
<b>5</b>	<b>CONTACT</b>
<b>5</b>	<b>ORGANIZING SECRETARIAT</b>
<b>5</b>	<b>SCOPE OF PAPERS</b>
<b>6</b>	<b>PAPER SUBMISSION ISTRUCTION</b>
<b>6</b>	<b>KEY DEADLINES</b>
<b>6</b>	<b>PROGRAMME AT A GLANCE</b>
<b>7</b>	<b>DESTINATION: VENUE &amp; THE CITY</b>
<b>9</b>	<b>WHY SPONSORING AND EXHIBITING</b>
<b>10</b>	<b>FLOORPLAN</b>
<b>11</b>	<b>SPONSORSHIP PACKAGES</b>
<b>12</b>	<b>EXHIBITOR OPPORTUNITIES</b>
<b>14</b>	<b>ADDITIONAL SPONSORSHIP ITEMS</b>
<b>15</b>	<b>TERMS &amp; CONDITIONS</b>

**ESREF 2024**, the 35<sup>th</sup> European Symposium on Reliability of Electron Devices, Failure Physics and Analysis, will take place in Parma, Italy, from September 23 to 26, 2024.

This International Symposium will continue its 35-year history of focusing on the latest research developments and future directions in failure analysis, quality and reliability of materials, devices and circuits for microelectronics and optoelectronics, power, space, and automotive electronics. It historically provides an European forum to develop all aspects of reliability, including management and advanced failure analysis techniques for present and emerging semiconductor applications.

## A WORD FROM THE GENERAL CHAIR

This edition will be a very special one: in 2024 ESREF will celebrate its return to Italy after 12 years. The Conference will be held in the earth of Motor Valley, a very productive region with many automotive brands and great know-how in the latest automotive technologies.

Besides, ESREF 2024 will be a unique opportunity to get in contact with Italian universities, with their unequaled background in reliability of automotive and electronic systems for automation.

**Paolo Cova**

*ESREF 2024 General Chair*

## CONFERENCE CHAIRMAN



**Paolo Cova**

*Professor of Electronics with the Department  
of Engineering and Architecture (DIA)  
of University of Parma (Italy)*

## CONFERENCE CHAIR

PAOLO COVA - University of Parma (IT)

## CONFERENCE VICE-CHAIR

NICOLA DELMONTE - University of Parma (IT)

## TECHNICAL PROGRAM CHAIRS

FRANCESCO IANNUZZO - University of Aalborg (DK)

MATTEO MENEGHINI - University of Padova (IT)

GIOVANNA MURA - University of Cagliari (IT)

## EXHIBITION & SPONSORSHIP CHAIR

NICOLA DELMONTE - University of Parma (IT)

## LOCAL ORGANIZING COMMITTEE

DANILO SANTORO - University of Parma (IT)

DAVIDE SPAGGIARI - University of Parma (IT)

FRANK ALTMANN - Fraunhofer, IMWS-CAM (DE)

CHRISTIAN BOIT - TUB, Tech. University of Berlin (DE)

GIOVANNI BUSATTO - University of Cassino and Southern Lazio (IT)

MAURO CIAPPA - ETH Zürich (CH)

OLIVIER CREPEL - AIRBUS, Group Innovations (FR)

INGRID De WOLF - IMEC (BE)

PHILIPPE GALY - STMicroelectronics (FR)

RALF HEIDERHOFF - University of Wuppertal (DE)

FRANCESCO IANNUZZO - University of Aalborg (DK)

NATHALIE LABAT - IMS University of Bordeaux (FR)

JOHN R. LLOYD - University of Albany (USA)

FRANCOIS MARC - IMS University of Bordeaux (FR)

MATTEO MENEGHINI - University of Padova (IT)

EDGAR OLTHOF - NXP Semiconductors (NL)

GEORGIOS PAPAIOANNOU - University of Athens (GR)

CORA SALM - University of Twente (NL)

MASSIMO VANZI - CNR-IMM Bologna (IT)

WOLFGANG WONDRAK - Daimler Chrysler (DE)

## EMERITUS MEMBERS

MARISE BAFLEUR - LAAS-CNRS (FR)

ALAIN BENSOUSSAN - TAS (FR)

YVES DANTO - IMS University of Bordeaux (FR)

FAUSTO FANTINI - University of Modena (IT)

WOLFGANG GERLING - ECPE (DE)

PHILIPPE PERDU - ANADEF (FR)

ANDRE TOUBOUL - IMS Univ. of Bordeaux (FR)

ECKHARD WOLFGANG - ECPE (DE)



# CONTACT

## LOCAL ORGANIZING COMMITTEE

- [info.esref2024@dii.unipr.it](mailto:info.esref2024@dii.unipr.it)  
*for information about poster and oral presentations, special requests, etc.*

## TECHNICAL PROGRAM CHAIRS

- [tpc.esref2024@dii.unipr.it](mailto:tpc.esref2024@dii.unipr.it)  
*for information about papers, topics, committees, etc.*

## EXHIBITION AND SPONSORSHIP

- [info@esref2024.org](mailto:info@esref2024.org)



# ORGANIZING SECRETARIAT

## SISTEMA CONGRESSI S.R.L.

Via Trieste 26, 35121 Padova, Italy  
Ph. +39 049 651699 | [www.sistemacongressi.com](http://www.sistemacongressi.com)

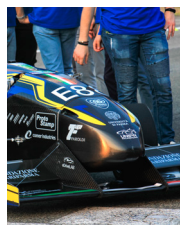
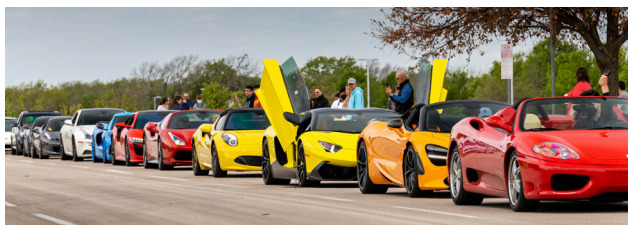
- [info@esref2024.org](mailto:info@esref2024.org)  
*for general information about ESREF 2024*
- [registration@sistemacongressi.com](mailto:registration@sistemacongressi.com)  
*only if you need assistance or information about registration procedures, payments and invoices*



# SCOPE OF PAPERS

## PAPERS ARE REQUESTED ON THE FOLLOWING TOPICS

- Automotive and Industrial Electronic Reliability
- Quality and Reliability Assessment Techniques and Methods for Devices and Systems
- Semiconductor Failure Mechanisms & Reliability
- Progress in Failure Analysis: Defect Detection and Analysis
- Reliability of Microwave and Wide Band-Gap Devices
- Packaging and Assembly Reliability and Failure Analysis
- Power Devices Reliability and Failure Analysis
- Photonics Reliability
- MEMS and Sensors Reliability
- Extreme Environments Reliability & Radiation





# PAPER SUBMISSION INSTRUCTION

## SUBMISSION GUIDELINES

Submitted four-page extended summaries must be written in English and include a front page with title, authors, affiliations, a five-line abstract, and the corresponding author complete address and e mail. A template can be found on the ESREF2024 website. On the basis of a peer-review process, the summaries will be accepted for oral or poster presentation, or rejected. At least one author must register for each accepted paper. For all the accepted summaries a six-page full paper will be requested, which will be included in the conference proceedings. Such papers will be also subject to a second review phase.

Selected manuscripts from the conference will be considered for publication in a special issue of "Microelectronics Reliability" (<https://www.sciencedirect.com/journal/microelectronics-reliability>), published by Elsevier, after the regular journal review process.

The 4-pages submitted abstracts must be mandatorily prepared following [this template](#), and be camera-ready for publication in the conference proceedings. Use of other templates or non-adequate graphic setting can be ground for rejection.



## KEY DEADLINES

**SUBMISSION OF EXTENDED SUMMARY** \_\_\_\_\_ March 24, 2024

**NOTIFICATION OF ACCEPTANCE TO CONFERENCE** \_\_\_\_\_ May 15, 2024

**AUTHOR REGISTRATION TO THE CONFERENCE** \_\_\_\_\_ June 5, 2024

**SUBMISSION OF PAPERS TO MR SPECIAL ISSUE** \_\_\_\_\_ from September 27 to November 15, 2024

**NOTIFICATION OF ACCEPTANCE TO JOURNAL** \_\_\_\_\_ January 2025



## PROGRAMME AT A GLANCE

**MONDAY**  
September 23

- 
- Tutorials
- Opening Ceremony
- Keynotes
- Exhibition Opening
- Welcome Reception

**TUESDAY**  
September 24

- 
- Sessions
- Exhibition
- Poster Session

**WEDNESDAY**  
September 25

- 
- Sessions
- Exhibition
- Poster Session
- Gala Dinner

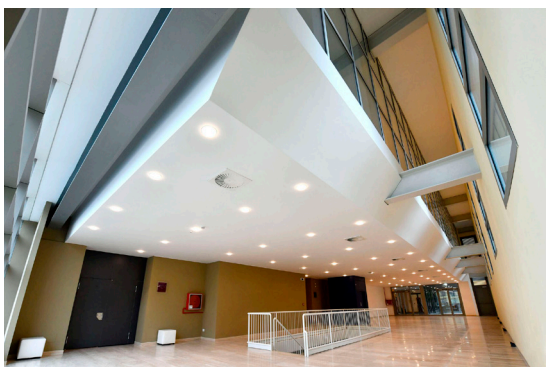
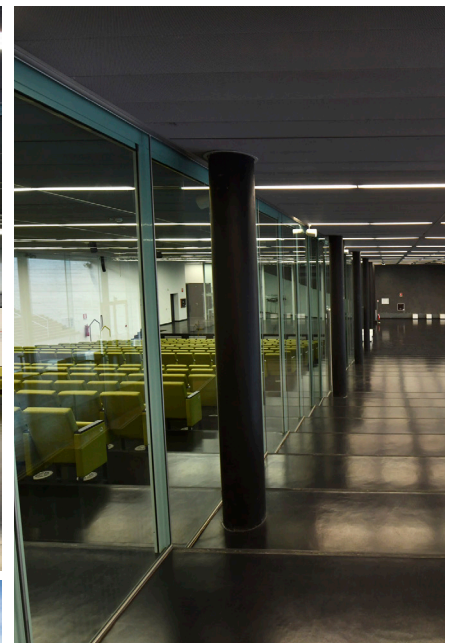
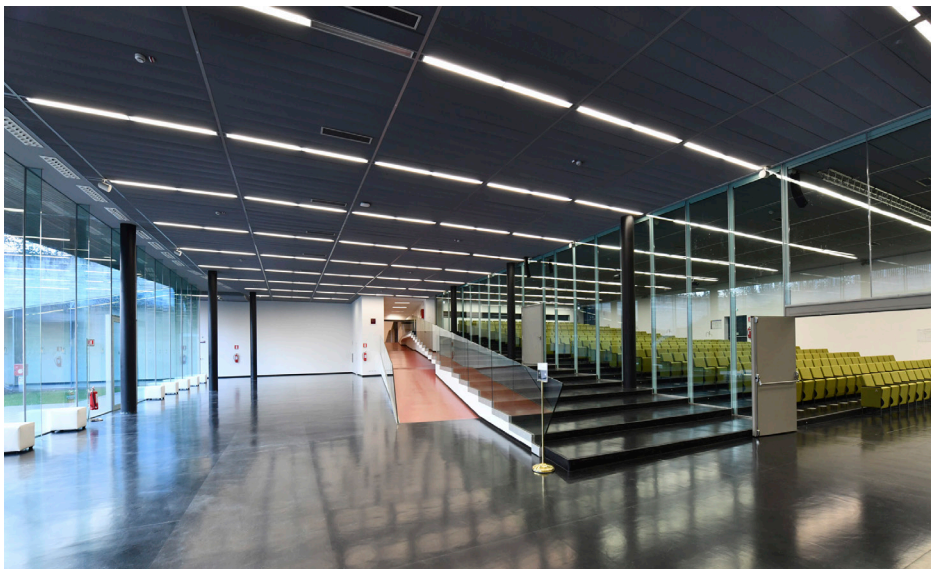
**THURSDAY**  
September 26

- 
- Sessions
- Exhibition
- Poster Session
- Best Paper Award

## VENUE



ESREF 2024 will be hosted in the **Paganini Conference Center**, the main conference center in Parma, located in the town, with its capacity of 1400 people and a 2000-square meter exhibition. The Paganini Center is located at the margin of the historic city center, at a 20-minute walking distance from Parma central train station and a 10-minute drive from Parma airport, with direct buses and a convenient taxi service.



## THE CITY

### Why Parma?

For history, for its cultural and food and wine fame, the evocative force of the most famous people, internationally known products. A privileged venue for work meetings, presentations and conferences.



**Parma** is the 2<sup>nd</sup> largest city in the Emilia-Romagna region and is famous for its delicious food products, heart of the Italian Food Valley; Parma has obtained UNESCO's recognition as "Creative City of Gastronomy". Romanesque buildings, including the frescoed Parma Cathedral and the pink marble baptistry, adorn the city centre. Cradle of opera, birthplace of Giuseppe Verdi, Parma is also renown for the Teatro Regio, a 19<sup>th</sup> century opera house. Inside the imposing Palazzo della Pilotta, the Galleria Nazionale, displaying works by the 16<sup>th</sup> century painters Correggio and Canaletto, and the spectacular wooden theatre Teatro Farnese can be visited. The headquarters of the European Food Safety Authority (EFSA) are located in Parma.



- European Capital of Food, earth of the Food Valley (EVSA headquarters)
- Parma, Italian Capital of Culture 2020-2021
- Parma: Capital of Lyric Music (Verdi festival across September and October)
- In the heart of Motor Valley (Dallara, Ducati, Ferrari, Lamborghini, Maserati, Pagani, ...)

## HOW TO REACH PARMMA

Parma is located in Northern Italy, about 100 km from Milan and from Bologna, it is easily reachable by car, train or plane. If you choose to arrive: By car: Take Motorway A1 Milan-Bologna (exit Parma) and A15 Parma-La Spezia/Genoa (exit Parma Ovest) For info, please visit: [www.autostrade.it](http://www.autostrade.it) By train: Most of trains travelling on the Milano-Bologna line stop in Parma, as well as those on Turin-Bologna and Genoa-Bologna lines. Rome and Florence are well connected thanks to highspeed trains in 3.30 hours (Rome) and 1.45 hour (Florence) arriving at Reggio Emilia AV Station. For info, please visit: <https://www.trenitalia.com/> and [www.italotreno.it](http://www.italotreno.it) By plane: The International Airports near Parma (about one-hour distance) are Milan Malpensa Airport (180 Km), Milan Linate Airport (120 Km), Bologna Airport (90 Km), Bergamo (162 Km) and Verona (115 Km).





Create **meaningful partnerships** and awareness about **your products and services**



**Reinforce and strengthen** your **brand position** within the world of meat technology and science



**Brand awareness & recognition** logo and advertisement placement



Increase **credibility, expand loyalty** and **build opportunities** with existing clients through informal engagement



**Highly targeted marketing** reach your community of interest



**Consolidate your presence:** real contact with real partners and customers!



Establish **international strategic partnerships**



**Network with like-minded** industry players and academic colleagues

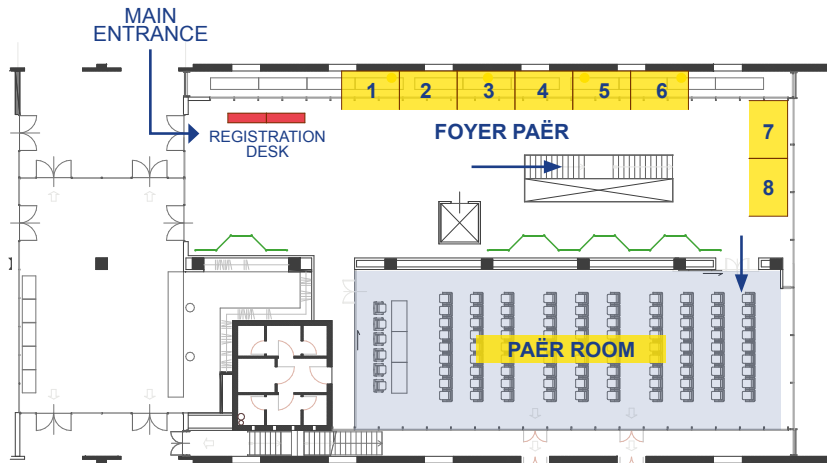


Ensure direct access to **key opinion leaders**

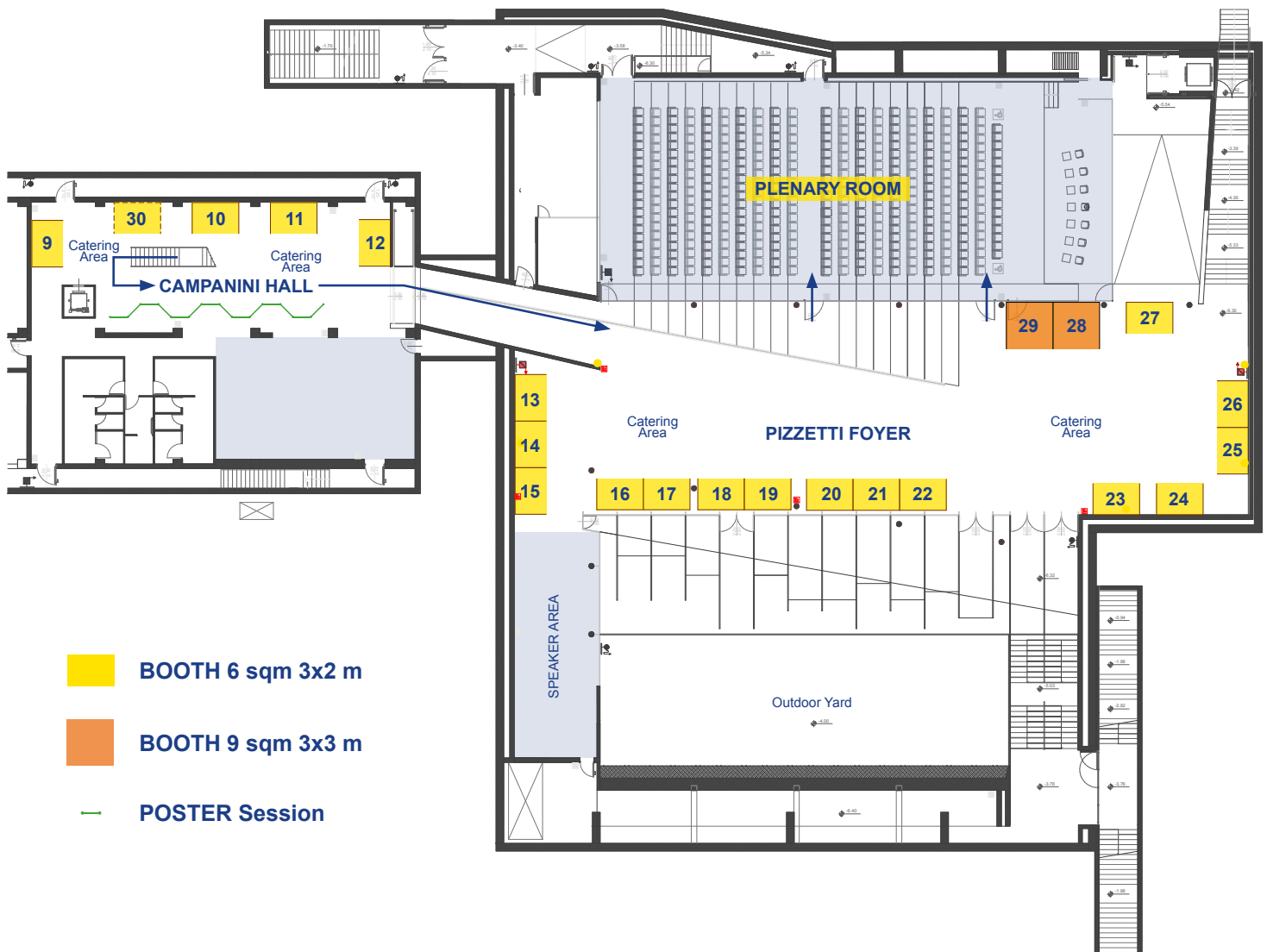


**Access to knowledge** find out about new technologies in the pipeline

## GROUND FLOOR



## UNDERGROUND FLOOR



ITEM	PLATINUM	GOLD	SILVER
	€ 12.000 max 1	€ 7.000 no limit	€ 4.000 no limit
Logo displayed on ESREF 2024 website in <b>HOME</b>	✓	✓	✓
Logo displayed on ESREF 2024 website in <b>SPONSORS PAGE</b>	✓	✓	✓
Company description n. words + Contact details on ESREF 2024 website <b>SPONSORS PAGE</b>	500 words	300 words	100 words
Welcome introduction noted as Main Sponsor (Slide show 4 pages or video 2 minutes)	✓		
Company Roll-up Banner displayed in the meeting room (provided by Company)	✓		
Logo on Conference slide to be shown in the meeting room during breaks	✓	✓	✓
Conference Registration (Gala Dinner not included)	3	2	1
Complimentary tickets for the Gala Dinner	1		
Colour advert in the Conference programme - one full internal page (artwork to be supplied by sponsor)	✓		
Company logo on back cover of Conference programme	✓	✓	✓
Logo shown on all newsletters	✓	✓	✓
Discount for an exhibition booth 6 sqm space	15%	10%	5%
Mention for one coffee break (logo on tables) - <b>1 DAY AT CHOICE</b>	✓		
Mention for one lunch (logo on tables) - <b>1 DAY AT CHOICE</b>	✓		

Exhibit  
**9 sqm**  
Space  
Max 2

Exhibit  
**6 sqm**  
Space

## SHELL SCHEME BOOTH

Deadline for confirmation & payment:  
**within December 31, 2023 \*posponed to January 22, 2024**

**€ 3.700**

**€ 2.900**

Deadline for confirmation & payment:  
**after January 22, 2024**

**€ 4.200**

**€ 3.200**

Exhibit sqm space

9 sqm

6 sqm

Schell scheme booth with perimeter wall booth, basic electricity 500 Watt, standard adhesive graphics with company name (no logo)

✓

✓

Free Exhibitor passes (Gala Dinner not included)

2

1

Complimentary tickets for the Gala Dinner

1

Logo displayed on ESREF 2024 website in SPONSORS PAGE

✓

✓

Company name on back cover of Conference programme

✓

✓

## SHELL SCHEME BOOTH 9 sqm

- Exhibit 9 sqm space
- Schell scheme booth with perimeter wall booth, basic electricity 500 Watt, standard adhesive graphics with company name (no logo)
- N. 2 free Exhibitor passes (Gala Dinner not included)
- N. 1 Complimentary tickets for the Gala Dinner
- Logo displayed on ESREF 2024 website in SPONSORS PAGE
- Company name on back cover of Conference programme

## SHELL SCHEME BOOTH 6 sqm

- Exhibit 6 sqm space
- Schell scheme booth with perimeter wall booth, basic electricity 500 Watt, standard adhesive graphics with company name (no logo)
- N. 1 free Exhibitor passes (Gala Dinner not included)
- Logo displayed on ESREF 2024 website in SPONSORS PAGE
- Company name on back cover of Conference programme

## PLEASE NOTE

This entitles the holder to attend the Conference, to receive the scientific material and to have full access to the exhibition area. It also covers lunches & coffee breaks for the duration of the Conference.

If booth is required, exhibitors would have to create and set-up their own corporate booth design within the space provided at their own cost. Please contact [info@esref2024.org](mailto:info@esref2024.org) for your interest. Only companies that provide products and services that are deemed appropriate are eligible to participate. The organizing committee reserves the right to screen for appropriateness.

A detailed exhibition manual will be provided 90 days prior to the Conference offering additional options to personalise your booth. This includes additional power, lighting, décor and other services.

## IMPORTANT INFORMATION

Please note that exhibition booth location is subject to the floorplan layout and allocated on a first come first served basis. Please list the top 2 preferences for your booth number in the on-line payment form.

The Organizing Secretariat will confirm the assigned booth number directly to the Company. Sponsors have exhibition booths included in their packages and will be clearly noted. Additional space can be purchased to increase your booth size. Complimentary exhibitor passes included in the exhibition package includes access to meals and refreshments in the exhibition hall.

## EXTRA FOR EXHIBITOR

More information about additional Exhibitor's Badge will be available from February 2024.

<p><b>FINAL PROGRAMME</b></p> <ul style="list-style-type: none"> <li>N. 1 full page Company profile on back cover of the Conference programme</li> </ul>	<p><b>€ 2.500</b></p>
<p><b>FLYER</b></p> <ul style="list-style-type: none"> <li>One Company flyer to be insert into Confernece bag (provided by Company)</li> <li>Logo displayed on ESREF 2024 website in SPONSORS PAGE</li> </ul>	<p><b>€ 1.500</b></p>
<p><b>PARTICIPANT BAG</b></p> <p style="text-align: right;"><i>Exclusive sponsorship</i></p> <ul style="list-style-type: none"> <li>Provide each participant with a branded Company bag to use at the Conference and afterwards. Bag with Conference logo and Company logo</li> </ul> <p><i>Please note: Bags will be supplied and branded by the Company</i></p>	<p><b>€ 2.500</b></p>
<p><b>NOTEPAD &amp; PENS</b></p> <p style="text-align: right;"><i>Exclusive sponsorship</i></p> <ul style="list-style-type: none"> <li>Provide each participant with a branded notepad and pen, Conference Organiser will pack these into the participant bags</li> </ul>	<p><b>€ 1.500</b></p>
<p><b>LANYARDS with Company logo</b></p> <ul style="list-style-type: none"> <li>Lanyards provided by Company</li> </ul>	<p style="text-align: right;"><i>Exclusive sponsorship</i></p> <p><b>€ 2.000</b></p>
<p><b>BRANDED GADGET</b></p> <ul style="list-style-type: none"> <li>Provide a branded gift for each guest to be distributed to the delegates in the Conference bags (gift provided by your company)</li> </ul>	<p><b>€ 1.000</b></p>
<p><b>POSTER SESSION SPONSOR</b></p> <ul style="list-style-type: none"> <li>Company Logo on Poster boards and Poster session signage</li> </ul>	<p style="text-align: right;"><i>Exclusive sponsorship</i></p> <p><b>€ 3.500</b></p>
<p><b>GALA DINNER (Wednesday, September 25)</b></p> <ul style="list-style-type: none"> <li>Company Roll-up displayed in Welcome reception area (roll-up provided by Company)</li> <li>Company Logo on Gala Dinner menu</li> <li>3 Complimentary tickets for the Gala Dinner</li> </ul>	<p style="text-align: right;"><i>Exclusive sponsorship</i></p> <p><b>€ 6.500</b></p>
<p><b>WELCOME RECEPTION (Monday, September 23)</b></p> <ul style="list-style-type: none"> <li>Company Roll-up displayed in Welcome reception area (roll-up provided by Company)</li> <li>Company Logo on Welcome Reception buffet tables</li> </ul>	<p style="text-align: right;"><i>Exclusive sponsorship</i></p> <p><b>€ 4.500</b></p>

Logos of the Companies will be displayed on ESREF 2024 website in SPONSOR PAGE.

## TAILOR MADE SPONSORSHIP

The Organizing Secretariat will be pleased to assist Companies with items and features which are not mentioned in this document. We will do any effort to customize your participation to the ESREF2024 Conference!

For any further information, please contact [info@esref2024.org](mailto:info@esref2024.org)

1. Prices do not include ITALIAN VAT (22%). Only Italian Companies are VAT taxable, therefore 22% VAT will be added on their final invoice.
2. The ESREF 2024 Organizing Committees retains the exclusive right to approve sponsorship applications.
3. Sponsors may not sublet, assign or apportion any part of the sponsor benefit(s) nor represent, advertise, or distribute literature or materials for the products or services of any other firm or organization except as approved in writing by the ESREF 2024 Organizing Secretariat.
4. The ESREF 2024 Organizing Secretariat will not be liable for damage or loss to a sponsor's or exhibitors' properties through fire, theft, accident, or any other cause while at the Conference venue whether the result of negligence or otherwise. Exhibitors are recommended to arrange their own insurance policies.
5. Sponsorship is not limited to financial support, but can also take the form of provision of services, ads, publicity, etc. Should your Company be interested in a custom sponsorship package, please feel free to contact us to discuss your offer.
6. In the event that the benefits of this sponsorship package undergo any changes, committed sponsors will be immediately notified and given the opportunity to retract or modify their sponsorship at no processing/cancellation fee.
7. Sponsorship/Exhibition application, properly executed by the applicant, shall, upon written acceptance and notification of sponsorship/exhibit booth assigned by the ESREF 2024 Committee or its agent, constitute a valid and binding contract.
8. Rates for additional services at the booth will be available 90 days prior to the Congress

## EXHIBITOR'S TECHNICAL MANUAL

An Exhibitors' Technical Manual outlining all technical aspects of exhibiting will be circulated **90 days** prior to the Conference. It will include the following:

- Updated Conference program
- Final exhibition details and information
- Final technical details about the Venue and Booths
- Set up/dismantling and delivery instructions
- Shipping address and instructions

## HOW TO BOOK YOUR SPONSORSHIP

In order to book and pay your sponsorship it is mandatory to fill the form at:

**[www.registerme.eu/esref-2024-sponsorship](http://www.registerme.eu/esref-2024-sponsorship)**

Payment will be by bank transfer. Sponsorship will be activated upon receipt of full payment on a first-come, first-served basis.

## PAYMENT, INVOICE, CANCELLATION POLICY

The Organizing Secretariat will issue an invoice once your sponsorship confirmation form is received. 100% payment is due upon confirmation.

Due to advance financial commitments, refunds requested after April 1, 2024, cannot be guaranteed. Consideration of cancellation requests for refunds received after April 1, 2024, will be processed after the conference. Cancellation requests received prior to April 1, 2024, will be refunded, less € 500 processing fees.

For more information, please contact:  
ESREF 2024 | Organizing Secretariat  
Email: [info@esref2024.org](mailto:info@esref2024.org)